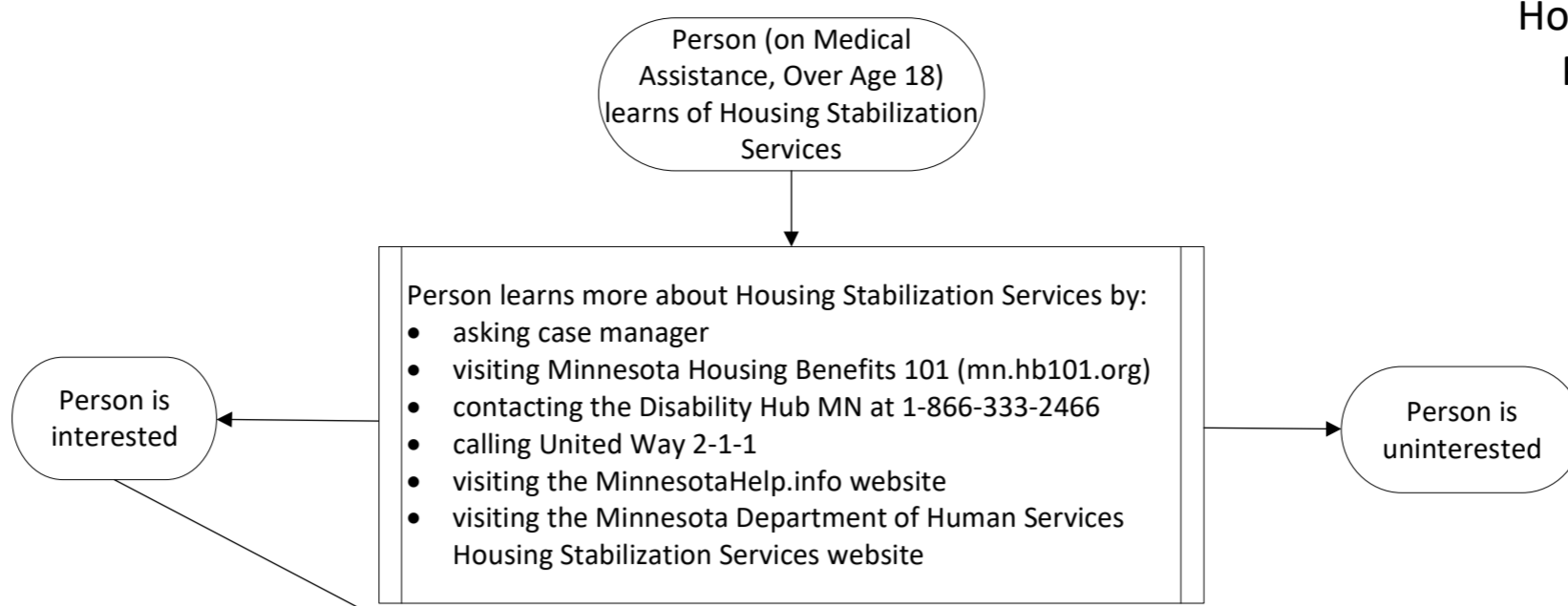
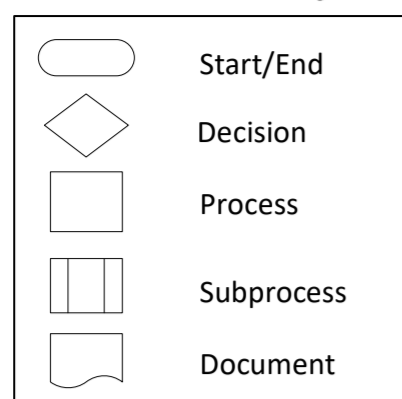


**Housing and Support Services Division
Housing Stabilization Services
Person-Served Workflow**

Flowchart Key



Person gets an assessment

Person uses one of three assessment pathways:

Professional Statement of Need (Primary Pathway)

Pathway assesses for:
- Housing Instability
- Disability or Disabling Condition
- Assessed Need for Services

MnCHOICES Assessment/ Long-term Care Consultation

Pathway assesses for:
- Housing Instability
- Assessed Need for Services

Coordinated Entry Assessment

Pathway assesses for:
- Housing Instability
- Assessed Need for Services

Person must have proof of disabling condition

Allowable proofs of disabling condition:

- Professional Statement of Need
- Medical Opinion Form
- Supplemental Security Income (SSI)/Social Security Disability Insurance (SSDI)
- On MA-BX, MA-DX, or MA-EPD
- Verification of Disability for HUD Section 811 Project Based Rental Assistance (811 Participants Only)
- State Medical Review Team (SMRT) Determination
- Age 65 or Older

Person appears to be eligible?

Person needs to get a person-centered plan

End Housing Stabilization Services enrollment process; Refer to other services

Does the person have:

A Waiver Case Manager or MSHO/ MSC+ Care Coordinator?

The waiver case manager completes or updates the **Coordinated Services and Supports Plan** to include Housing Stabilization. A MSHO/MSC+ care coordinator completes the Coordinated (Collaborative) Care Plan to include Housing Stabilization Services.

A Targeted Case Manager?

The targeted case manager completes the **Housing Focused Person-Centered Plan**.

No Waiver or Targeted Case Manager?

Person meets with an enrolled Housing Consultant for person-centered planning and receives a **Housing Focused Person-Centered Plan**

Person selects a housing transition/sustaining provider

Case Manager, MSHO/MSC+ Care Coordinator, or Housing Consultant sends the completed/updated person-centered plan to the transition/sustaining provider selected by the person

Case Manager or MSHO/MSC+ Care Coordinator Completed Person-Centered Planning?

Housing transition/sustaining provider submits the person-centered plan, assessment, and disability documentation (as appropriate) to the Minnesota Department of Human Services for an eligibility determination.

Housing transition/sustaining provider reviews and signs the person-centered plan, agreeing to provide services

Housing Consultant Completed Person-Centered Planning?

Housing consultant submits the Housing-Focused Person-Centered Plan, assessment, and disability documentation (as appropriate) to the Minnesota Department of Human Services for an eligibility determination.

Minnesota Department of Human Services determines eligibility

Approved

Person, transition/sustaining provider notified

Transition/sustaining services start

Annual reassessment and/or change to person-centered plan

Denied

Go back to the person-centered planner for discussion and next steps

Person may appeal the decision

Person decides to not pursue Housing Stabilization Services

If someone says their proof of disability is having MA-BX (blind), MA-DX (disabled), or MA-EPD (employed persons with disabilities)—all types of Medical Assistance where the basis of eligibility is the disability—or their proof is age, Minnesota Department of Human Services Eligibility Review Staff will look this up in state systems. If someone says they are on SSI or SSDI, no additional verification is needed because DHS Eligibility Review Staff can also look this up in state systems. Documentation is not required at the time the person applies in these instances.

Note: People can search for enrolled Housing Stabilization Services providers by visiting MinnesotaHelp.info. Type "Housing Stabilization Services" in the service search bar and identify the city where services are needed.

Annual reassessment